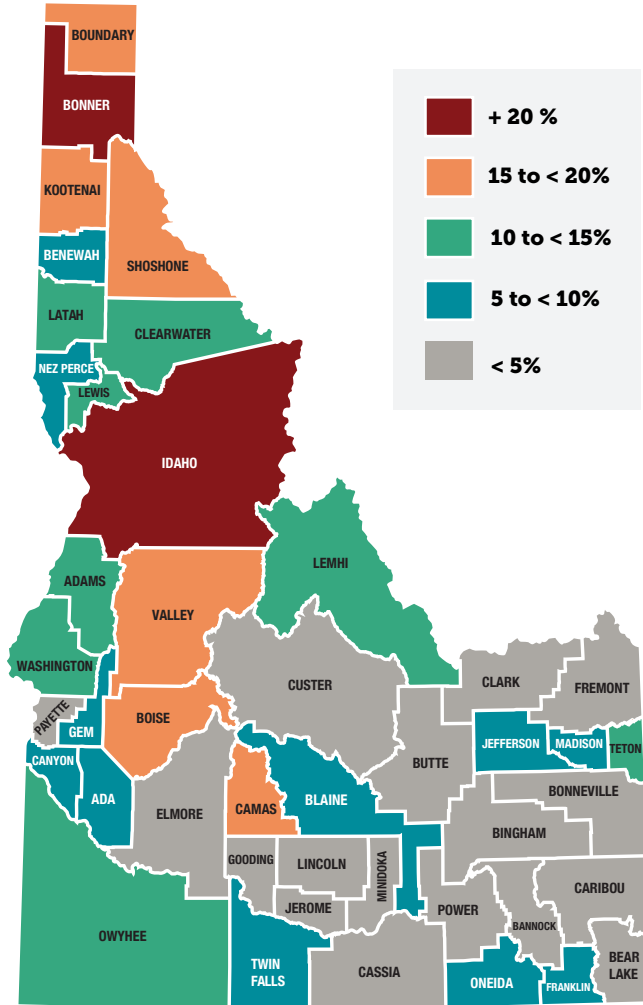


PROTECT IDAHO. GET IMMUNIZED.



Exemption rates—specifically, nonmedical exemptions—are rising in Idaho and pose a serious public health threat to the state. With outbreaks of vaccine-preventable diseases like measles appearing across the U.S. and in neighboring states, it is critical that we stand up against challenges to science-backed immunization standards.

2018-19 School Immunization Report

Rate of Exemption to One or More Vaccines*

Ada	8.4	Cassia	4.9	Lewis	11.8
Adams	12.1	Clark	0.0	Lincoln	4.7
Bannock	4.0	Clearwater	14.0	Madison	5.5
Bear Lake	3.5	Custer	3.0	Minidoka	4.9
Benevah	9.5	Elmore	4.5	Nez Perce	5.8
Bingham	3.9	Franklin	5.2	Oneida	5.1
Blaine	5.3	Fremont	3.5	Owyhee	11.8
Boise	15.1	Gem	8.1	Payette	4.4
Bonner	23.0	Gooding	3.7	Power	1.6
Bonneville	4.6	Idaho	21.8	Shoshone	18.4
Boundary	19.6	Jefferson	8.2	Teton	10.0
Butte	2.1	Jerome	2.8	Twin Falls	5.4
Camas	15.2	Kootenai	15.0	Valley	16.3
Canyon	6.9	Latah	11.1	Washington	10.9
Caribou	4.9	Lemhi	10.5		

* The percentage (by county) of student records with an exemption on file for one or more school required vaccines. An exemption on file is not an indicator of unvaccinated status. Statewide, 4.2% of students have exemptions on file for all school-entry vaccines.

* Data derived from Idaho school-level reports of student immunization for kindergarten, first grade and seventh grade students combined depending on grade levels found within each school.

Source: Idaho Department of Health and Welfare: https://public.tableau.com/profile/idaho.division.of.public.health#//vizhome/SIR2017_2018and2018_2019/IdahoSchoolImmunizationReport

Counties with highest exemption rates:ⁱ

COUNTY	RATE
Bonner	23%
Idaho	22%
Boundary	20%
Shoshone	18%
Valley	16%

School districts with highest nonmedical exemption rates:ⁱⁱ

DISTRICT	RATE
Avery	50%
Wallace	33.3%
Garden Valley	26.3%
Cambridge	25%
Mountain View	22%



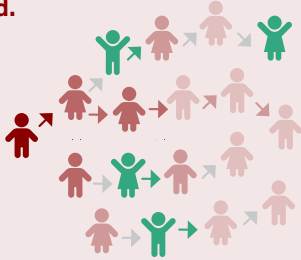
The majority of exemptions recorded in Idaho during the 2018-2019 school year were for nonmedical reasons: **7.4%**, marking a concerning increase from the 6.4% reported for the previous school year.^{viii} In contrast, the U.S. median, nonmedical exemption rate was much lower: **2%**.^{ix}

What is Herd Immunity?

HERD IMMUNITY, or community immunity, is achieved when enough of the population is vaccinated to keep a disease from spreading and potentially harming its most vulnerable members. It is recommended that 93-95% of a population is immunized to be protected via herd immunity. Unfortunately, some school districts in Idaho have immunization rates as low as 33.3%.^{vii}

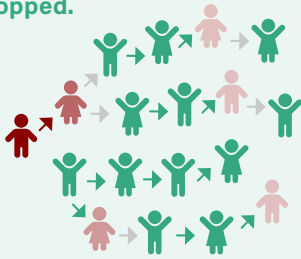
No Herd Immunity

Low immunization rates = less protection of community, outbreaks spread.



Herd Immunity

High immunization rates = wider protection of community, outbreaks are stopped.



IT'S TIME TO TAKE ACTION AND PROTECT OUR COMMUNITIES.

HOW DOES THIS AFFECT US?

Without strong immunization standards, preventable disease can and will reemerge in Idaho. This would expose our children to deadly diseases such as...

Whooping coughⁱⁱⁱ

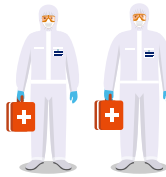


More than **100,000 cases** in the U.S. since 2014



Up to **20 babies** in the U.S. die each year

Measles^{iv}



One of the **most contagious** diseases known to humans^v



Can cause irreparable damage to **immune system** and potential long-term **brain damage**^{vi}

Influenza



More than **100 deaths** in Idaho during 2017-18 flu season

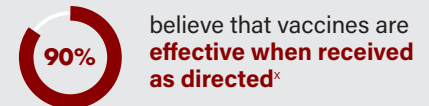
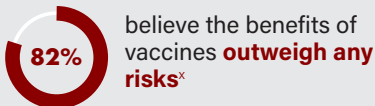


Over **79,000 deaths** in the U.S. during last year's flu season

WE CANNOT ACCEPT THIS. HERE'S WHAT YOU CAN DO:

- Contact** your state representative to vocalize your support for pro-vaccine legislation or oppose efforts to loosen current immunization requirements
- Emphasize** the safety and effectiveness of vaccines in your conversations with friends, family and colleagues to help clarify common misconceptions
- Educate** your community on the importance of vaccinations and receiving them on time
- Amplify** local campaigns and clinics by volunteering and spreading the word via social media
- Support** local public health measures and legislation to lower the exemption rates across the state
- Join** our coalition of parents standing up for the facts by visiting our website at GetImmunizedIdaho.org

IDAHOANS OVERWHELMINGLY SUPPORT VACCINATIONS



Get involved at GetImmunizedIdaho.org

The Idaho Immunization Coalition (IIC) is a vital assembly of statewide stakeholders dedicated to promoting health and preventing serious illness through immunization protection of all Idahoans. IIC recently launched Get Immunized, Idaho to engage parents who believe in the benefits of vaccinating their children.

ⁱ Idaho Department of Health and Welfare

ⁱⁱ Idaho Department of Health and Welfare

ⁱⁱⁱ <https://www.vaccinateyourfamily.org/questions-about-vaccines/outbreaks-of-vaccine-preventable-diseases/>

^{iv} <https://www.vaccinateyourfamily.org/questions-about-vaccines/outbreaks-of-vaccine-preventable-diseases/>

^v <http://healthandwelfare.idaho.gov/Portals/0/Health/Epi/Flu/Idaho%20Influenza%20Surveillance%202017-2018%20final.pdf>

^{vi} <https://www.cdc.gov/flu/about/burden/2017-2018.htm>

^{vii} Idaho Department of Health and Welfare

^{viii} https://healthandwelfare.idaho.gov/Portals/0/Health/Idaho%20Immunizations/Schools/2018_2019_MultiYear_SIRStatewideSummary.pdf

^{ix} <https://www.cdc.gov/vaccines/imz-managers/coverage/schoolvaxview/data-reports/exemptions-dashboard/2017-18.html>

^x Edelman Intelligence Survey Data, November 2018

@GetImmunizedIdaho

@GetImmunizedIdaho

Idaho Immunization Coalition



Get Immunized, Idaho