



Unrestrained Occupants

Fatal and Serious Injury Crashes in Idaho: 2010-2012

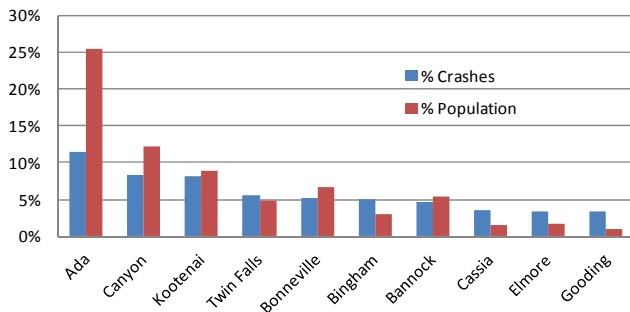
Idaho has a large percentage of unrestrained passenger vehicle occupants seriously injured and fatally killed each year. The National Highway Traffic Safety Administration (NHTSA) estimates safety restraints are 50% effective in preventing fatalities and serious injuries. By this estimate in 2012 an additional 37 lives could have been saved if everyone had buckled up. Additionally, safety restraint use reduces fatalities by 74% in rollover crashes involving passenger cars and by 80% in rollover crashes involving light trucks. Idaho's three year average seatbelt usage rate is 78.7%.

How significant is the problem?

Over the last 3 years (2010-2012), there have been 433 fatal crashes and 2747 serious injury crashes involving a Passenger Motor Vehicle (PMV) resulting in 420 fatalities and 3024 serious injuries of the PMV occupants. Of the 420 PMV occupant fatalities, 222 (53%) were unrestrained and of the 3024 serious injuries, 852 (24%) were unrestrained. The unrestrained PMV occupants represent 40% of all of the people killed and 21% of all of the people seriously injured in traffic crashes from 2010-2012. Of the passenger motor vehicle occupants killed or seriously injured in crashes, 13% were partially or totally ejected from the vehicle. The majority (88%) of the occupants that were partially or totally ejected from their vehicle were unrestrained.

Where?

Top Ten Counties

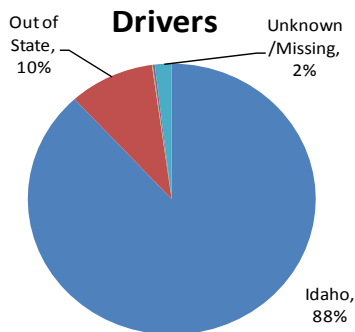


The breakout by roadway type of fatal and serious injury crashes involving unrestrained occupants from 2010-2012.

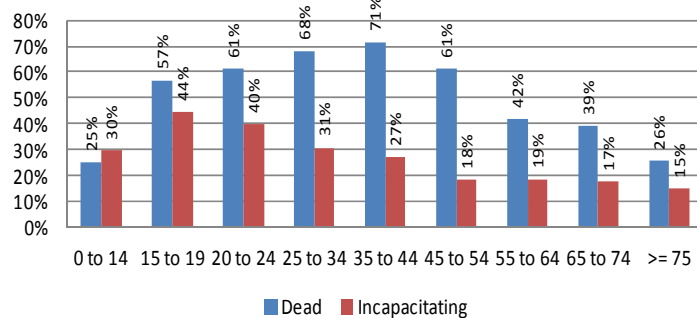
Roadway Type	F&SI Crashes	Percent	Percent
Interstate	356	11%	23%
US & State Highway	1621	51%	31%
Local Road	1203	38%	47%

The top 10 counties represent 59% of the unbelted fatal and serious injuries of PMV's occurring in Idaho over the last 3 years (2010-2012).

Who?



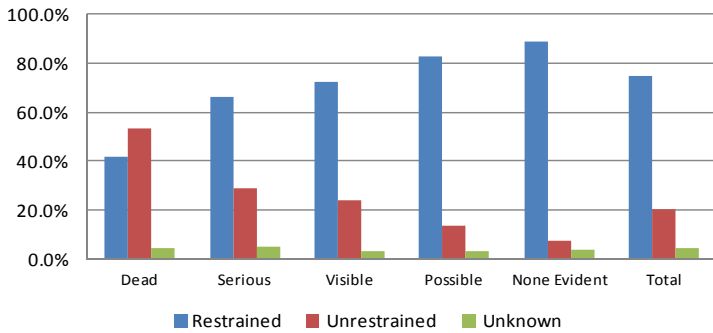
% Unrestrained



State of Licensure of driver's involved in fatal and serious injury crashes with unrestrained occupants

The percent of occupants of each age category unrestrained. Percent is determined for each category, not by total.

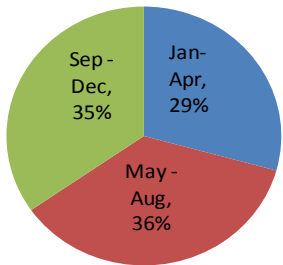
% Restraint Use by Injury



In examining the restraint use by all passenger motor vehicle occupants in fatal and serious injury crashes (at least 1 occupant was killed or seriously injured in the crash), you can see the direct correlation between restraint use (increasing) and injury severity (decreasing).

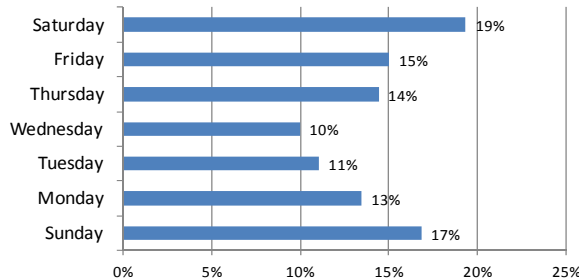
When?

F&SI Crashes by Month



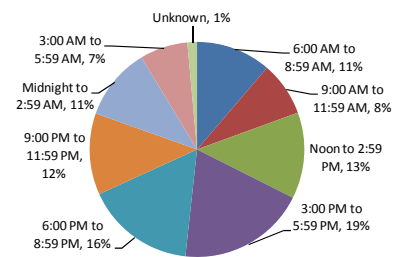
The breakdown of crashes by month

F&SI Crashes by Day



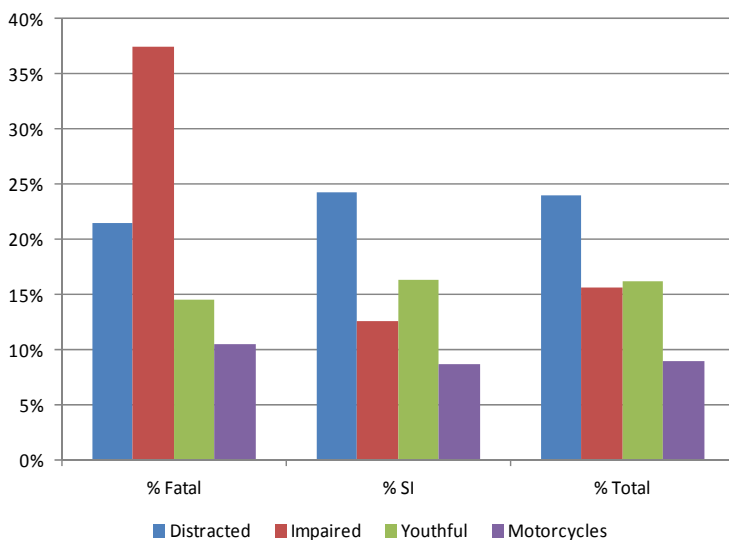
The breakdown of crashes by day of week

Time of Day



The breakdown of crashes by time of day

Other characteristics



The graph shows the percentage of unbelted fatalities and serious injuries that also involved an aggressive driver, distracted driver, impaired driver or a youthful driver.

For more information about *the Seatbelt Program*, contact Lisa Losness, (208) 334-8103 or lisa.losness@itd.idaho.gov.

8 out of 10 Idahoans Buckle Up.

Do you?

TOWARD ZERO DEATHS

Idaho Transportation Department